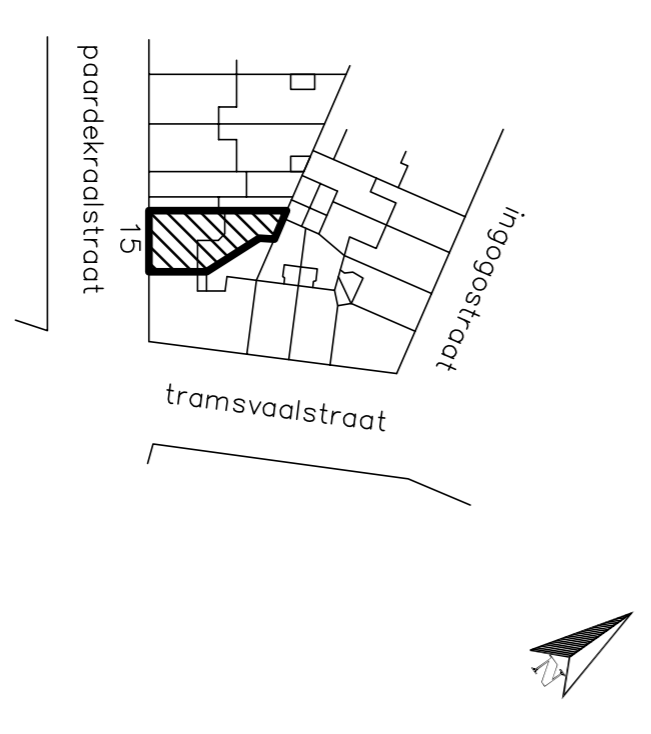
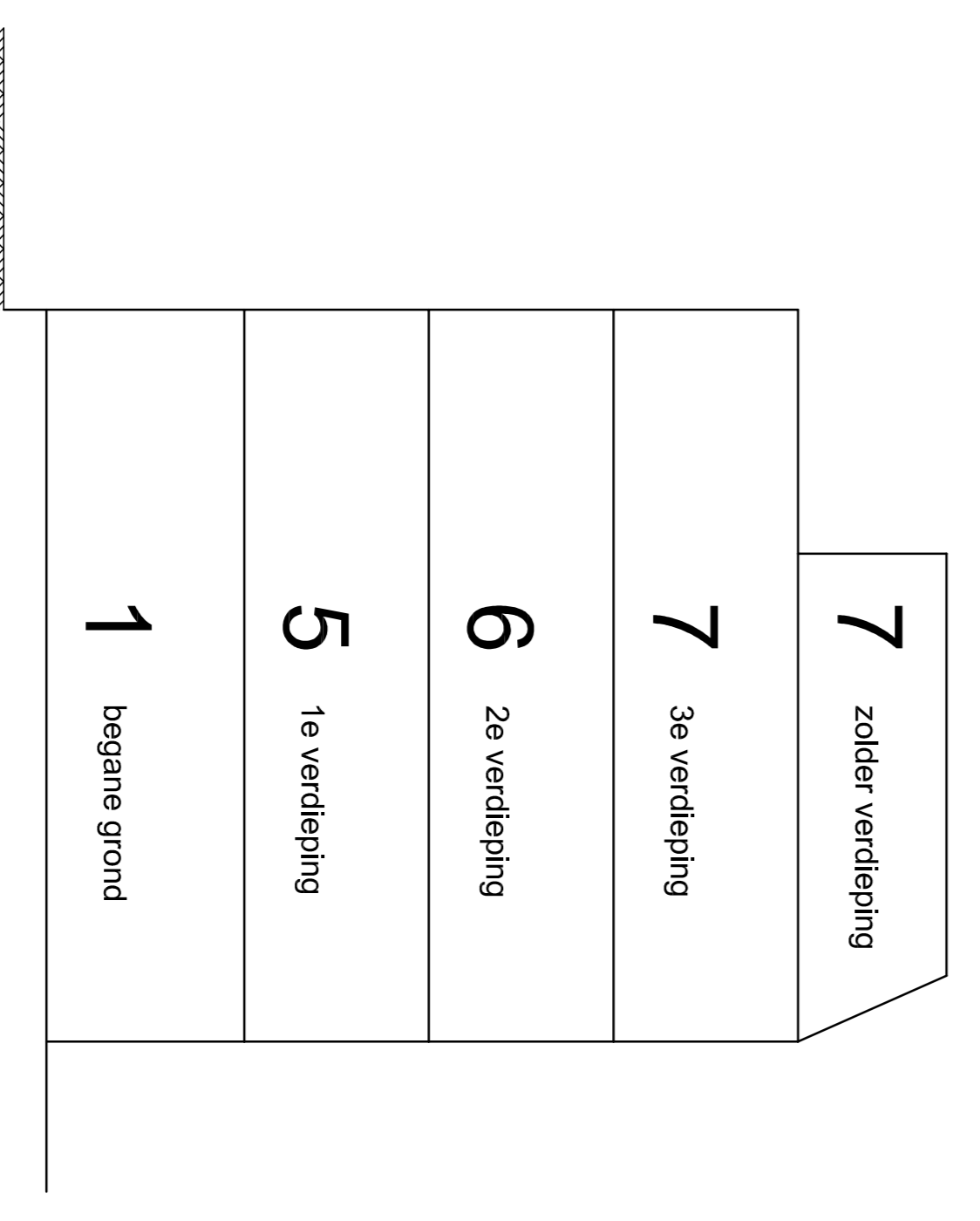
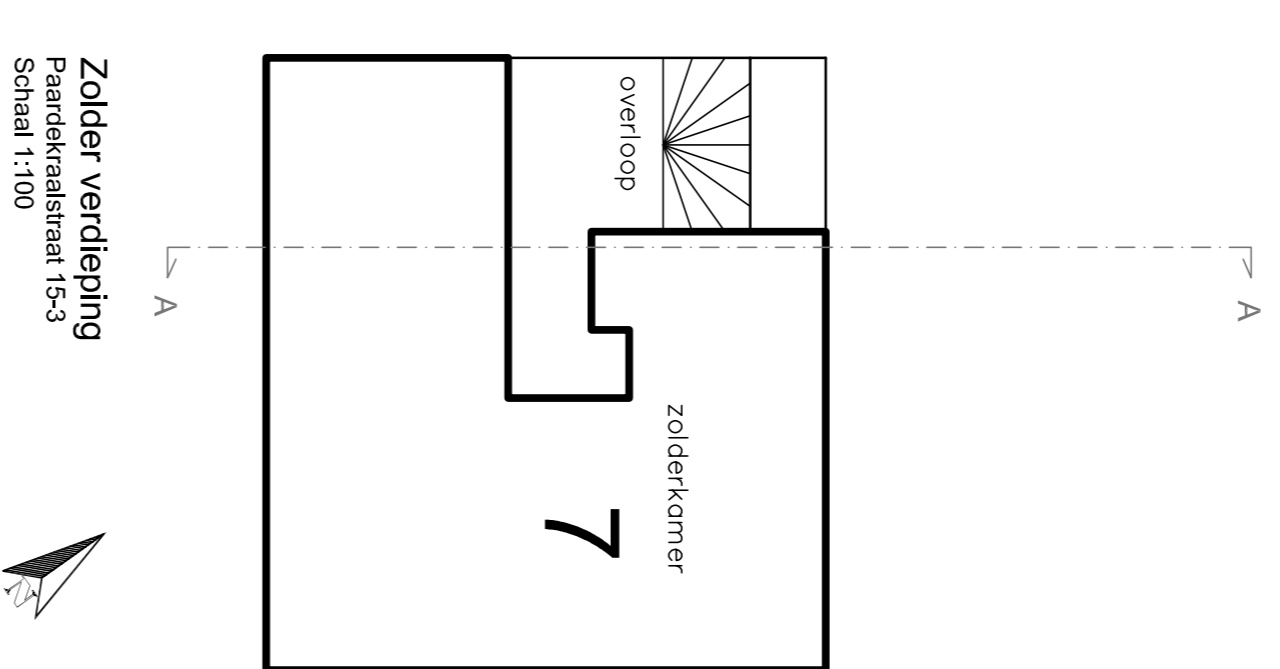
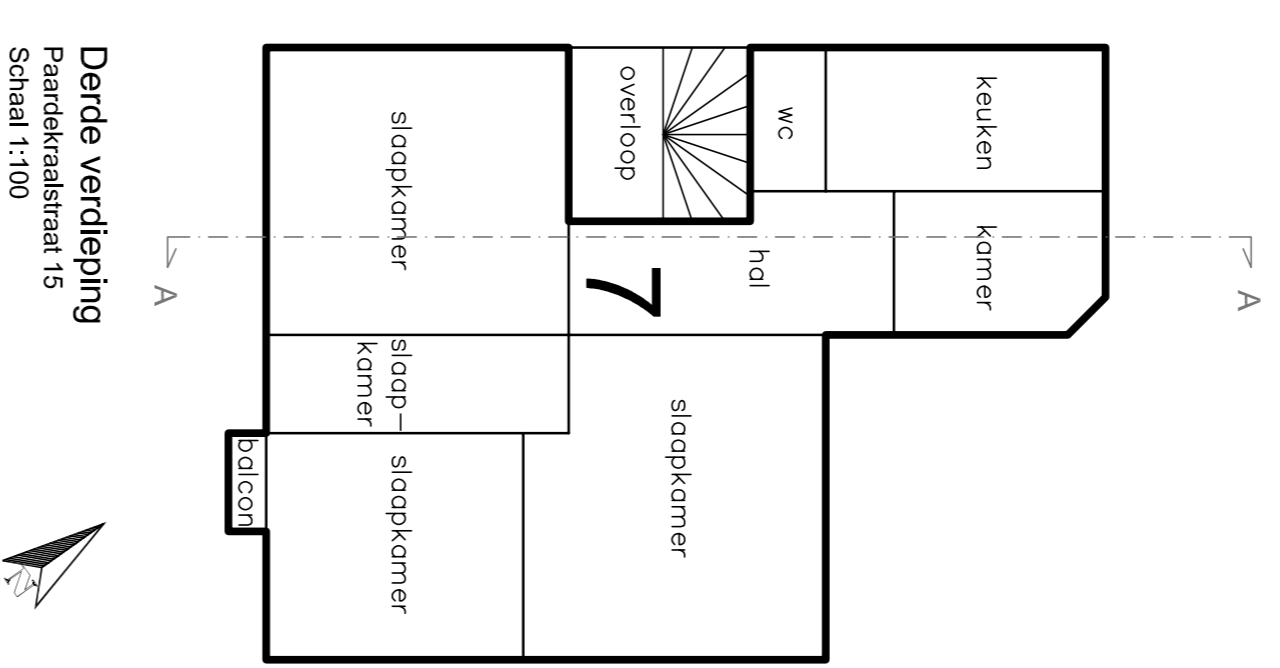
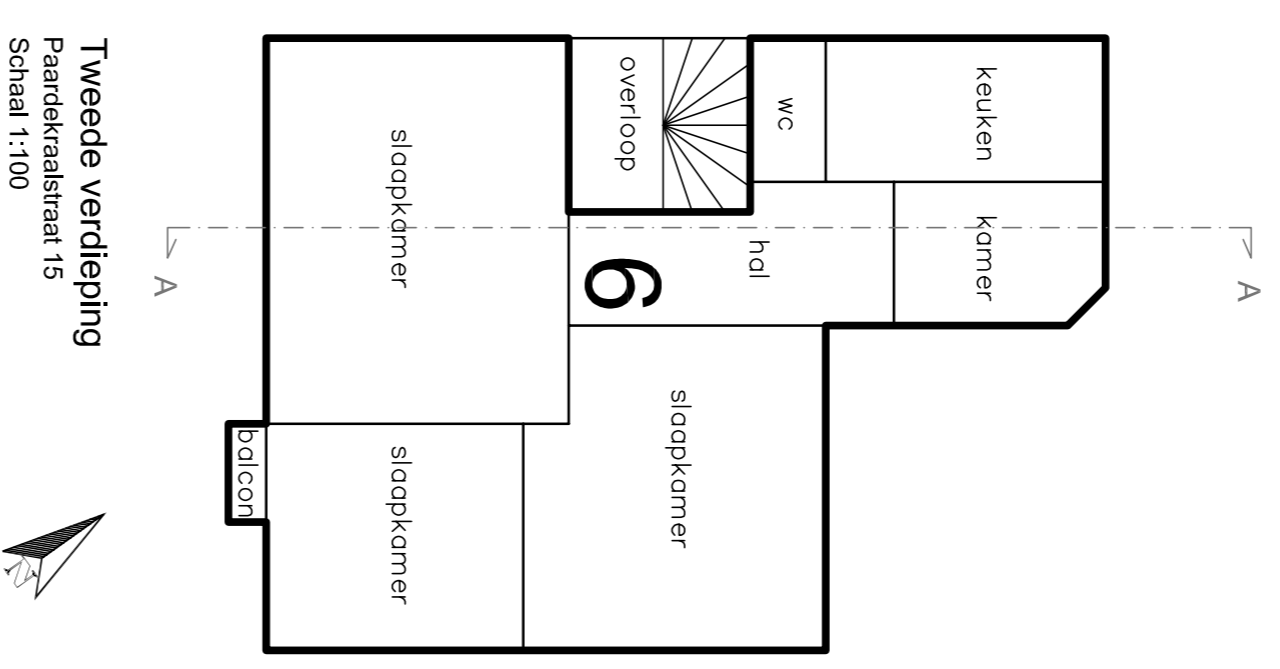
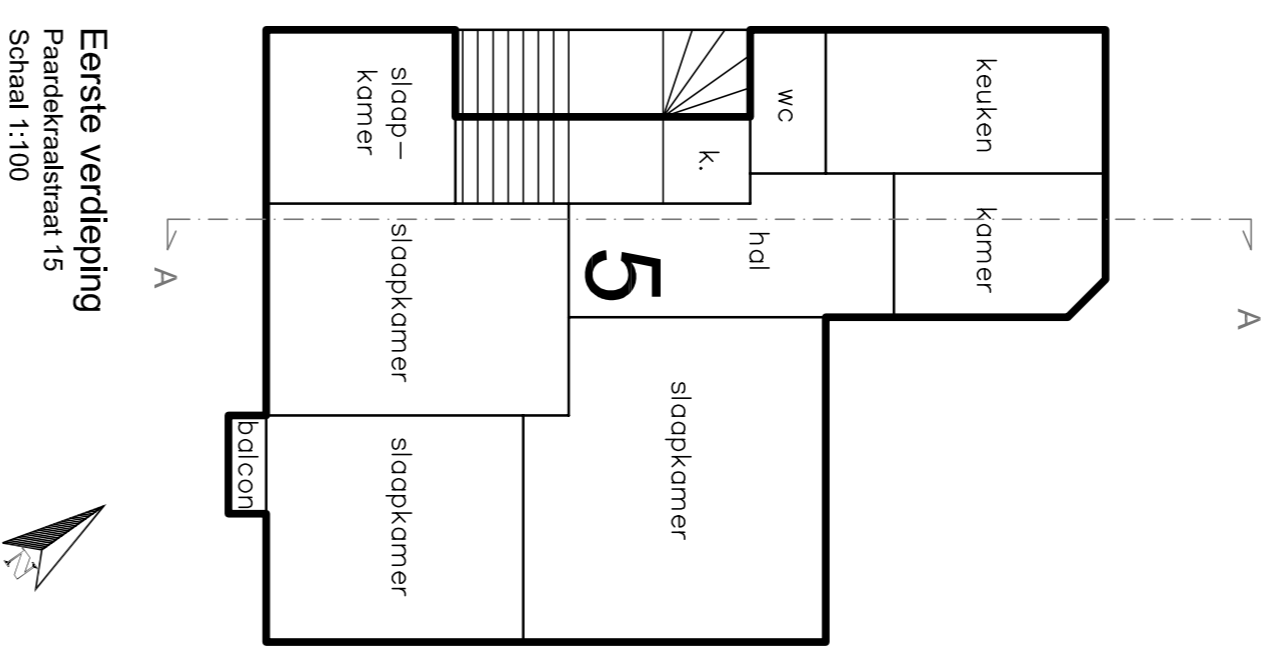
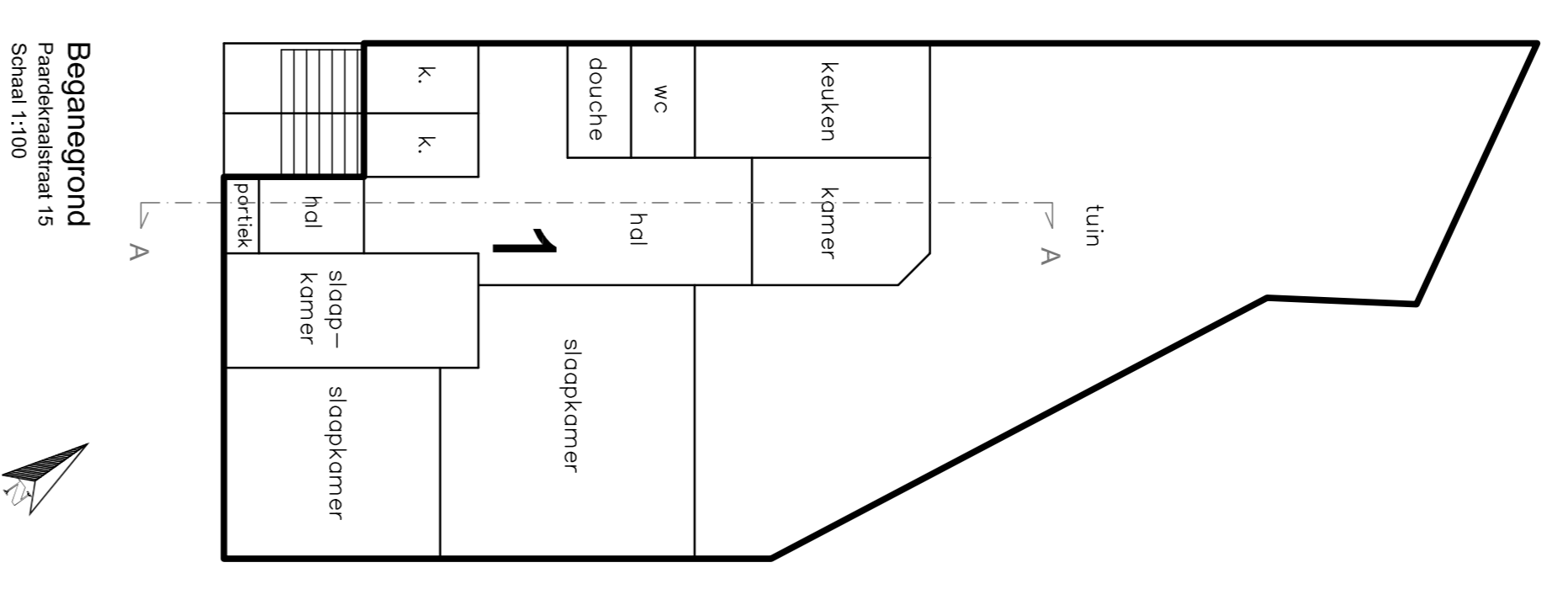


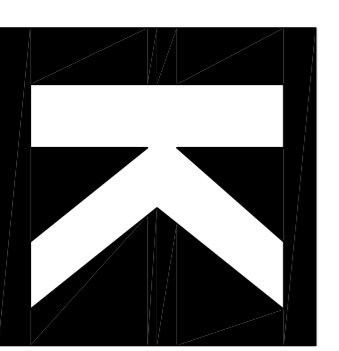
Vorgenomen wijziging van de splitsing met betrekking tot de appartementsrechten kadastraal bekend gemeente Amsterdam, sectie W, complexaanduiding 7035, indices 2, 3 en 4..

Paardekraaistraat 15
 Gemeente: Amsterdam
 Sectie: W
 Nummer: 2502

d.d.
 de Notaris



opdracht	Paardekraaistraat 15	schaal	1:100/1:1000
ontwerp	Splitsingsaanvraag	formaat	A1
projectarchitect	Roland King	datum	27 sep 2010
		gewijzigd	-



Roland King
 Wormendstraat 103 II
 1058 K T Amsterdam
 M 020 669 0000
 E rol@rolking.nl
 W www.rolking.nl

	17-LJ
	ST